



Recorder News



Issue 37

Transferware news from Reynardine Publishing

September 2022

Welcome

Another somewhat late appearance for this issue, caused largely by essential work for possible future volumes of *The Transferware Recorder*, spurred on by a grant from the Transferware Collectors' Club (see separate pages). We would particularly draw your attention to those extra pages, listing images needed of views of continental Europe and the British Isles. Please see if you can help. Late or not, we have a pot-pourri assortment for you with new discoveries, another uncommon sauceboat, Welsh and Scottish interest and a touch of Jersey, a Britannia metal mount, and just a smidgeon of toilet humour. We hope you like it. News, views, or other comments all welcome, of course, to the usual *Recorder* email address please:

recorder@transferprintedpottery.com

Join the Mailing List

If you would like to be added to the circulation list for this *Recorder News*, for which there is no charge, just send your details, including email address to:

recorder@transferprintedpottery.com

New Item

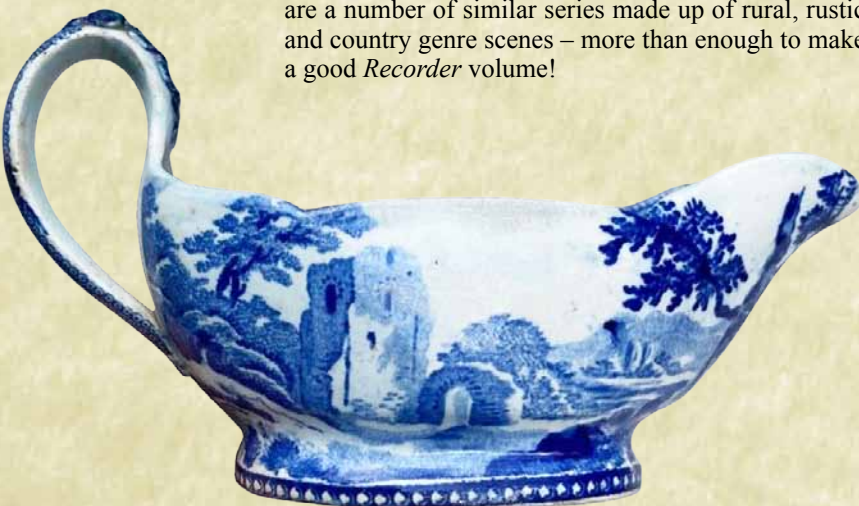
Assembling the chapter on the "Metropolitan Scenery" series for TR3 proved quite a challenge but the result seemed worth the work. It was always likely that additional



pieces would turn up, and here we have a fine comport or two-handled bowl printed with the "View of Richmond" together with Unidentified Scene C on the outer sides (shown courtesy of Terry Neale-Sheppard). The Richmond view was previously only known on plates. We have still not solved the conundrum about the view of Twickenham, so if anyone can help with that, or indeed any other items from the series, please get in touch.

Sauceboats

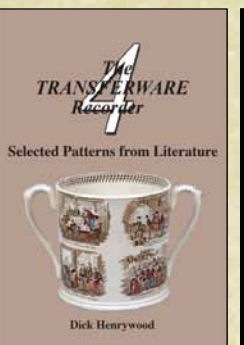
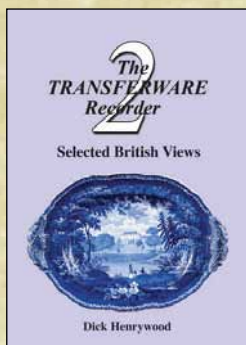
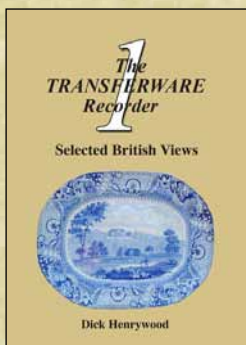
We have mentioned the paucity of sauceboats before so were pleased to come across this attractive example (shown courtesy of Nina Marshtein). Superficially by an unknown maker, a floral border is printed inside the rim which shows it to be part of Davenport's Rustic Scenes series. We don't generally cover series which have not yet appeared in *The Transferware Recorder*, but make an exception this time to show an unusual feature of a moulded leaf on the top of the handle. It may help in attributing other examples. Incidentally, the Rustic Scenes series is fairly extensive, our records extending to more than thirty different patterns. There are a number of similar series made up of rural, rustic and country genre scenes – more than enough to make a good *Recorder* volume!



New Discovery



The two volumes of *The Dictionary of Blue and White Printed Pottery* contain references to several different makers of supposedly patented water closets. They include Stephen Hawkins, Henry Marriott, and Robert Wiss, all of London. We have now discovered another, this time from Birmingham. The inscription shown here appears on a blue and white pan in a typical wooden water closet. Unfortunately we only have this detail image to go on! Initial research has located John Chatwin Stokes as a painter, plumber, glazier & water closet manufacturer at 33 Broad Street, Easy Row, in a Birmingham directory for 1867, but this style of water closet would typically be somewhat earlier. Perhaps someone else can flush him out further?



Volume One
Published October 2013
176 pages. 579 illustrations.
ISBN 978-0-9926581-0-6

Volume Two
Published June 2015
176 pages. 594 illustrations.
ISBN 978-0-9926581-1-3

Volume Three
Published October 2016
184 pages. 596 illustrations.
ISBN 978-0-9926581-2-0

Volume Four
Published March 2018
208 pages. 710 illustrations.
ISBN 978-0-9926581-3-7

The Transferware Recorder

All four volumes of *The Transferware Recorder* are currently available. The contents of each volume together with downloadable copies of all issues of this *Recorder News* can be found on the website:

www.transferprintedpottery.com

Worldwide shipping is available but please email for a price quote for whatever combination of volumes you require. Other enquiries and potential contributions to this *Recorder News* should also be addressed to:

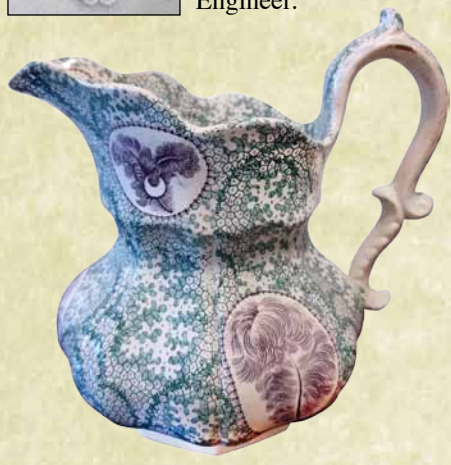
recorder@transferprintedpottery.com

Ornate Jugs

The features on ornate jugs have proved popular so here's another good pouch-shaped jug from Swansea. The moulded mark is inscribed "CYMRO / STONE / CHINA" (clearer example shown here).



The reserves of feathers on a sheet ground are particularly attractive. Shared courtesy of Soli Engineer.



Jersey Scenes



Views of Jersey are not common and those known were all made in Wales! There is one by Dillwyn and a series by the Llanelly Pottery, this plate showing Fliquet Bay. We would love to hear of other examples.

Thanks

You may have noticed that many items in the *Recorder News* include credits for images or information. We owe our thanks to everyone who contributes and without such help, these publications could not exist. You will find along with this issue a note of images still required for volumes of *The Transferware Recorder*. Please see if you can help.

Dates for your Diary

The worldwide pandemic led to the cancellation of most physical meetings, including those by the FOB and TCC. Although slowly returning to normal, this year's FOB meeting will be organised remotely and the TCC Annual Meeting will be held online on Sunday 30 October.

Mark Time

Our interest in retailers' marks continues unabated and we were delighted to have news of this one from far northern climes (courtesy of Graeme Cruickshank). Peter Cardno seems to have been last in a family line of "glass and stoneware" retailers in Aberdeen, descended from Peter Cardno (senior), his wife Isabella who took over c.1825, and their sons James & William, c.1836-42. The mark appears on a mid-century Willow pattern ashtray (platter). The significance of the "11 In" in the centre of the mark is a puzzle. Suggestions welcome.



New Deykin view

Way back in issue 11 of this *Recorder News* we looked at a few teapot stands with pottery slabs within Britannia metal mounts made by Deykin & Sons of Birmingham. We mentioned views of "Windsor Castle" and "Holyrood Palace". There is also a view of "Scott's Monument Edinburgh" and another of the 1885 Edinburgh International Exhibition. We can now add a view much further south showing the "Clifton Suspension Bridge" in Bristol. The example shown here courtesy of Kristina Murzina is printed in green and the view is both titled and signed by "Deykin & Sons, Birmingham". It is possible that the slabs were made by T. & R. Boote. News of any other views in the series would be very welcome.



5 *The* TRANSFERWARE / 6 *Recorder*

The Transferware Collectors' Club has announced the award of one of their Richards Research Program grants to enable production of another volume of *The Transferware Recorder*. As a result we are working on further chapters for possible inclusion. One group of chapters concentrates on views of continental Europe and another on additional views of the British Isles (not covered in volumes 1 to 3). Unfortunately we are hampered, as ever, by the lack of a number of images. Please check the lists below and overleaf to see if you can help. Contact, as always, via email to recorder@transferprintedpottery.com.

"Ancient Greece" series (Ralph Stevenson)

A complex series of at least sixteen untitled views of which just four have been identified. Any items except the dinner plate could be of interest.

Byron Views series (Copeland & Garrett)

An extensive and relatively common series of at least twenty-seven European views, plus seven smaller as yet unidentified scenes. We would be pleased to hear of any examples on less common items (i.e. not plates or platters) or in colours other than blue or green.

Continental series (Wood & Challinor)

An uncommon series of at least eleven titled continental views. Two are needed:

- "Castle Montdragon" (item not known)
- "Rimini" (dinner plate)

"Continental Views" series (Copeland & Garrett)

A surprisingly uncommon series of at least seventeen untitled continental views, ten having eluded identification. Not being titled they are difficult to specify. We would be pleased to hear of literally any examples.

"Continental Views" series (Machin & Potts)

A very uncommon series of at least twenty-two European views. Nine are needed:

- "Bellagio, Lago di Como" (soup tureen)
- "Cape Colonna" (plate)
- "Castle of Chillon" (platter)
- "Cintra" (comport)
- "Corfu" (item not known)
- "Heydelberg" (platter)
- "Klumm" (plate)
- "St. Pietro de Castello, Venice" (platter; deep dish)
- "Trent" (platter)

"European Lions" series (John Ridgway)

A rare series about which little is known and only six views have been recorded. Three are needed:

- "Black Rock, Cork" (item not known)
- Newstead Abbey, Nottingham (not titled) (plate)
- "Yanina" (plate)

"Hamburg Ansichten" series (maker unknown)

A series made for export covering at least seventeen views of Hamburg. Two are still needed:

- "Das Dammthor" (child's plate)
- "Schul und Bibliothek Gebäude" (child's plate)

"Italian Scenery" series (Enoch Wood & Sons)

An extensive series of at least thirty titled views of Italy plus a few which remain unidentified. Two are needed:

- "Temple of Venus, Rome" (small plate)
- "View of Naples" (cup plate)

"No.106" series (Enoch Wood & Sons)

An uncommon series (with an unusual yellow border) including at least fifteen titled continental views. One is still needed:

- "Dresden" (item not known)

Russian War series (maker unknown)

A little-known series of views of cities associated with the Russian War of 1854-56, found only on mugs and jugs. One view is needed:

- "Kars" (jugs)

Individual Views (various makers)

- "Odessa" (Hope & Carter). Pattern registered on 31 March 1865
- "Kieff" (Trachtenberg & Panthes, importer). Pattern registered on 4 May 1869

The Transferware Collectors' Club has announced the award of one of their Richards Research Program grants to enable production of another volume of *The Transferware Recorder*. As a result we are working on further chapters for possible inclusion. One group of chapters concentrates on views of continental Europe and another on additional views of the British Isles (not covered in volumes 1 to 3). Unfortunately we are hampered, as ever, by the lack of a number of images. Please check the lists below and overleaf to see if you can help. Contact, as always, via email to recorder@transferprintedpottery.com.

Arabesque Border series (Copeland & Garrett)

A surprisingly uncommon series of at least eighteen mostly titled British views. Eight are still needed:

- “Eton” (large platter)
- “Folkstone” [sic] (platter)
- “Greenwich Hospital” (stand for soup tureen)
- “Hastings” (tea plate)
- “Plymouth” (platter, slop vase, footbath)
- “Pope’s Villa” (small platter)
- “Richmond Bridge” (platters)
- Richmond Place, Surrey (not titled) (toilet box)

Cities and Towns series (Harvey)

A small series of only twelve titled British views. Five are still needed:

- “Gloucester” (small patter)
- “Richmond” (stand for soup tureen)
- “Warwick Castle” (vegetable dish)
- “Worcester” (soup tureen; wash jugs)
- “York” (platter; slop vase)

Flowers and Leaves Border series (Adams)

An extensive series of at least thirty-five titled British views, which is proving particularly frustrating since so many are proving elusive. Thirteen are still needed:

- “Berkeley Castle, Gloucestershire” (vegetable dish)
- “Carstairs, Lanarkshire” (dessert plate)
- “Dews Hall, Essex” (tea plate)
- “Fonthill Abbey” (toddy plate)
- “Kimberly Hall, Norfolk” (vegetable dish & cover)
- “Moditonham House, Cornwall” (soup tureen)
- “Polesden, Surrey” (plate)
- “Rode Hall, Cheshire” (tea plate)
- “Stanmer Park, Sussex” (sauce tureens)
- “Tixall, Staffordshire” (large platter)
- “Wellcombe, Warwickshire” (tea plate)
- “Wells Cathedral” (plates)
- “Wilton House, Wiltshire” (small platter)

Fruit and Flower Border series (Henshall)

Another lengthy series, this one a mixture of at least forty British, European and American scenes. The British scenes are often marked “British Views”. Despite its extent, only two are needed:

- “Abington Abbey” (small platter; pierced stand)
- “Compton Verney” (large platter)

“Hibernia” series (John Wedg Wood)

An uncommon series of views of Ireland, only nine of which have been recorded. Unfortunately they are all untitled but two readily recognisable views are needed:

- Sackville Street, Dublin (item not known)
- The Four Courts, Dublin (plate)

“Irish Views” series (Careys)

Another uncommon series of only ten known views of Ireland. Two are still needed:

- “Carrick a Rede” (large oval stand)
- “City of Waterford” (footed bowl)

Jersey Scenes series (Llanelly Pottery)

A late and uncommon series of at least nine views of the island of Jersey printed with various different borders. Only nine views are known, of which five are still needed:

- “La Chaire, Rozel, Jersey” (plate)
- “Prince’s Tower, Jersey” (item not known)
- “Rozel Bay, from the Sea” (plate; jugs)
- “Rozel Harbour, Jersey” (bread platter)
- “View looking from St Aubins, Jersey” (item not known)

“Northern Scenery” series (John Meir & Son)

A later series of rather romantic views of Scottish lochs and castles, with seventeen titles being known. Four are still needed:

- “Loch Achray” (item not known)
- “Loch Katrine Looking Towards Ellen’s Isle” (item not known)
- “Loch Leven Looking Towards Ballahuish Ferry” (item not known)
- “Loch Ness” (toilet box)

“United Kingdom” series (R.A. Kidston & Co.)

A series of twelve titled views, four of which are still needed:

- “Cowes” (vegetable dish)
- “Dublin from Phoenix Park” (item not known)
- “Edinburgh” [sic] (platter)
- “Inverness” (item not known)